

IMBUBE MARATHON

#PUSHYOURLIMIT

www.imbubemarathon.com

18 OCT 2025

CHARITY RUN
3.3 KM
SOLD OUT

FUN RUN
10 KM
SOLD OUT

HALF MARATHON
21 KM
SOLD OUT

IMBUBE MARATHON
42 KM
SOLD OUT

SOMHLOLO NATIONAL STADIUM

ENPF Standard Bank

imbube@enpf.co.sz +268 79021121 | +268 79021127

WHAT'S HAPPENING

Eswatini

No. 10

VOLUME 26

October/Imphala

#SiyabuyaKe...Until Next Year.



The journey that shaped

We launched... and anticipated you were coming, Eswatini



THE 2025 Eswatini International Trade Fair carried a bold promise: to transform a 57-year legacy into a modern stage of “Digital Transformation 2.0: Creating Business Networks.”

Looking back at the launch, the Minister of Commerce, Industry, and Trade reflected on the journey, saying:

“When we spoke of Digital Transformation 2.0, it wasn’t just a theme. It was a commitment to show that Eswatini is ready to create networks that move our nation forward; in trade, in industry and in innovation.”

CONTENTS

→ The journey that shaped EITF 2025	2
→ Polka dots and Polo dreams: Swazi Polo returns in style	4
→ It’s here! The Imbube Marathon 2025	5
→ The Nkonyeni green escape	6
→ 3 reasons to visit Shewula	7
→ Cinema with a cause	8
→ Gears, Guns and Gills	9
→ Visit Sandlane Rock Paintings	10
→ Versatile venue for stays and events	10
→ Yebo Art	11
→ From candles to couture: 5 must-have brands	16
→ Mantenga Lifestyle & Craft Centre	17
→ From sunset to sunrise, non-stop energy	18
→ A perfect escape in the mountains	19
→ Ready for adventure?	20
→ Game viewing	21
→ Looking for LODGING?	21
→ THE BIG ADVENTURE LIST	22
→ Where to dance this October?	23



Echoing this, the EIPA CEO Sibani Mngomezulu noted:

“EITF2025 was about giving business networks room to breathe and expand. We wanted to create a Fair that wasn’t just visited, but lived by exhibitors, investors and every liSwati who walked through.” So we said **#AsambeKe** and before over **75 000 visitors**, we first took the Fair to them.

This year’s **EITF Pop Ups** brought the spirit of the Trade Fair to Lubombo, Shiselweni, and Hhohho. These stops weren’t roadshows; they were lively celebrations that blended music, culture and hands-on exhibitions. The message was clear: EITF is for everyone, everywhere.

Partners in the Journey

Sponsors and partners were there from the very beginning.

- **ETVA** extended the reach of activations with live outside broadcasts.
- **EBIS** kept the nation tuned in with wall-to-wall coverage.
- **KIA** revved excitement ahead of the *Win-A-Car* competition.
- These partnerships are at the core of the success of the annual EITF, Khumbuzile Mbingo from EBIS said, “There are so many mutual benefits cultivated, and at the centre of it all are business owners who want to thrive.”
- **#SesifikileKe ...** Then it was time for the Kick-

Off and you made it happen

- Momentum surged with **Fit Friday**, a wellness-inspired launch that brought teams together. By the time exhibitors gathered for the official briefing, the buzz was unstoppable.
- EIPA HR, Pam Mkhonta, from the organising team, put it best:
- “Fit Friday showed us that EITF is about energy, resilience and community, not just business.”
- When the gates opened, the showcase unfolded across four promises, each one met by thousands:
- **We knew you would come for business — and you did.** Exhibitors unveiled bold stands across agriculture, tech, health, construction and government services. Consultations, demos and on-site services transformed stalls into hubs of problem-solving.
- **We knew you would come for sports — and you did.** The **8Bet Trade Fair Cup** and **MulaSport Games** turned the Sports Arena into a celebration of passion and pride.
 - **We knew you would come for entertainment — and you did.** Drag racing, cultural showcases, dance competitions and live music lit up the Fairgrounds day after day.
- **We knew you would bring the kids — and you did.** From fun-filled games to rides and activities, families found a safe, exciting space.

“

...When we spoke of Digital Transformation 2.0, it wasn’t just a theme. It was a commitment to show that Eswatini is ready to create networks that move our nation forward – in trade, in industry and in innovation.”

Minister of Commerce, Industry & Trade

As one visitor summed it up:

“I came for the business, but ended up dancing, cheering for soccer and learning about farming tech. It was the best of everything.”

Moments we won’t forget

EITF2025 delivered experiences that will stay with us:

Digital integration

The fair’s EITF app received new features, making registration, navigation and voting for the Stand Excellence Awards seamless. The **Buy Eswatini** platform was launched, empowering local producers with digital tools to reach more markets.

New experiences

The **Nedbank Green Zone** introduced eco-friendly living and sustainable solutions. **Jenny Internet** ensured seamless connectivity across the grounds. New digital products like **Government in Your Hands**, **TaxPal**, **Phumdelezini** and **MTN Cowtracker** showed how Eswatini is embracing technology.

Business front

The **Business Seminars** drew packed audiences. Topics like industrial finance, youth entrepreneurship and digital inclusion gave entrepreneurs practical tools.

“The seminars didn’t just talk theory; they gave people clear steps to scale, finance and digitalise their businesses,” said Thandeka Dlamini from EIPA.

Sporting front

The **8Bet Cup Finals** electrified the Sports Arena, while **MulaSport competitions** in volleyball, basketball and netball gave new energy to the Fair.

The **Business One Stop Shop (BOSS) Experience Lounge**

A streamline service for businesses and investors; all processes happen within two weeks to a month instead of long waiting periods.

This space is created to not only make business registration and administration smoother but also provide a professional space for you and your business partners to meet, network and spark new opportunities. This is the space where ideas turn into action.

WHAT'S HAPPENING Eswatini

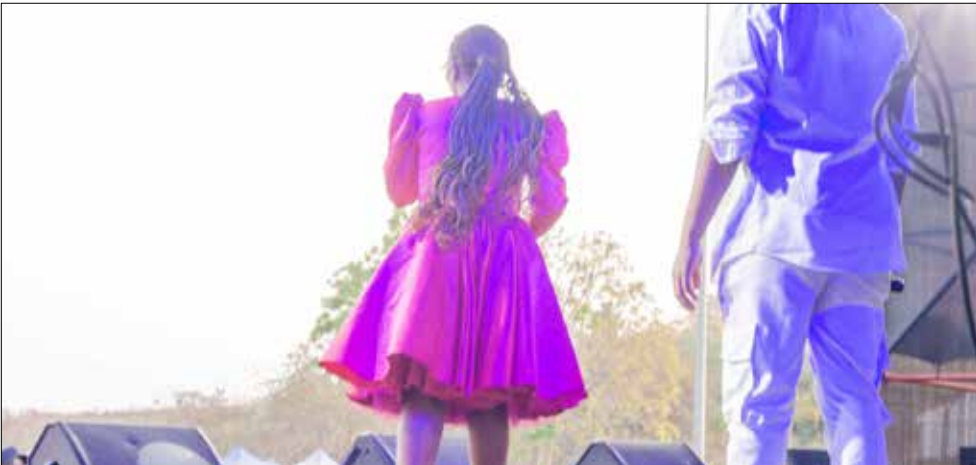
- Up to 15 000 publications each month
- Monthly updated information and maps
- Distributed across the country
- Discounted rates on contracts

EDITOR: Zinhle Matsenjwa
DESIGNER: Wandile Dlamini

email: whatshappening@times.co.sz
Cell: +268 7986 1147



EITF 2025



#SiyabuyaKe ... Until next year

As the lights dimmed, gratitude shone brightest.
EITF Executive Manager of Trade Sibusiso Mnisi reflected:
“EITF2025 was a leap into the future; inclusive, innovative and transformative. We thank every sponsor, exhibitor and visitor who made it a success.”
The closing message from EIPA captured the spirit moving forward:
“EITF2025 has set the bar high, but it is only the beginning. Next year, we return bigger, better, bolder — because Eswatini’s story is still being written and the trade fair is one of its strongest



chapters,” said EIPA CEO.
So we say it again: **#SiyabuyaKe.**
Because at EITF, we don’t just exhibit. We **Connect. Create. Grow.**



Polka dots and Polo dreams: Swazi Polo returns in style



FORGET ordinary weekends – on October 11, 2025, the rolling lawns of Yellowstone Estate in Swazi Lizkhar will transform into a kaleidoscope of polka dots, pounding hooves and pure glamour. The much-anticipated Swazi Polo is back, blending fast-paced sport with high fashion, live music and a festival spirit that has made it one of Eswatini's most stylish days out.

Day in polka dots

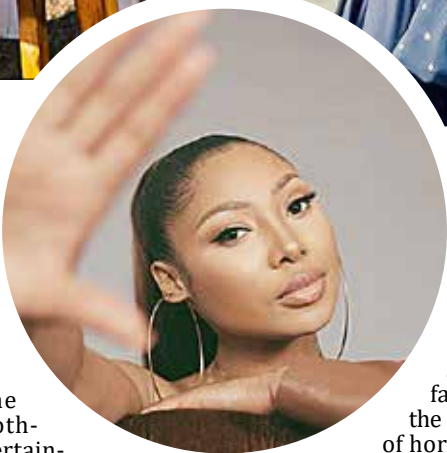
This year's theme is 'Polka Dot' – a playful call to dig out your boldest prints, chic hats and statement silhouettes. From late morning, guests will be welcomed with a leisurely brunch (included in the E550 ticket) before the action unfolds. Expect an afternoon bursting with polo matches, music, fashion showcases and plenty of opportunities to mingle under the Eswatini sun.

“...step onto the sweeping lawns of Yellowstone Estate and into a world of polka dots, live music and timeless polo tradition.”

Polo with panache

Though polo is at its heart, the event is more lifestyle carnival than purely equestrian match. Crowds will be treated to live performances, fashion pop-ups and gourmet bites under the shade of trees.

sweeping lawns. The acclaimed Jaziel Brothers headline the entertainment for the day, expected to bring energy and flair to the event. While the illustrious Alan Stewart, aka Dj Wicked, will be the host for this year's event and Sakhile Simelane the co-host.



Why visit?

For the discerning traveller, Swazi Polo offers more than just sport. It presents a window into Eswatini's growing cultural flair, merging tradition with contemporary style. Guests can savour local cuisine, browse fashion stalls, dance beneath the sky and witness the elegance of horse and rider in action. With scenic landscapes and the vibrant energy of the crowd, it's an experience tailor-made for anyone seeking something uniquely Swati. From the first chukka to the final song, you'll want the best seat on the lawn; so polish those polka dots and claim your spot. In case you miss this edition, start planning for next one - Swazi Polo 2026, it will take place in late September or early October.



“...from the first chukka to the final song, Swazi Polo is a festival of elegance, energy, and Eswatini flair.”



It's here! The Imbube Marathon 2025



OCTOBER has arrived bringing with it the much-anticipated Imbube Marathon, Eswatini's flagship running event that has grown into a true celebration of endurance, community and national pride.

Although registrations for this year are now closed, the journey is far from over. For the runners who have trained through long mornings and challenging evenings this is the month when dreams will meet determination on the open roads. Each step and pace is to prove resilience and determination, echoing the spirit of the 'lion' (*Imbube*) that gives the marathon its name.

The Imbube Marathon is more than a race. It is a festival of togetherness where athletes from across the Kingdom and beyond push their limits while spectators line the route with cheers and encouragement. The energy of the crowd becomes the rhythm that carries runners forward when their muscles tire and their will is tested.

For travellers and

locals alike the event offers a unique glimpse into Eswatini's vibrant culture. The course winds through scenic landscapes blending the raw beauty of the countryside with the energy of city streets. From elite athletes chasing victory to first-time participants running for personal milestones every stride tells a story worth witnessing.

Supporters are encouraged to come out in numbers to lift the spirits of the runners and to share in the electric atmosphere. Whether you clap from the sidelines shout from the finish line or simply offer a smile along the route your presence can make the difference between giving up and pushing through.

As the Kingdom rallies behind the athletes the Imbube Marathon stands as a reminder that strength is not only found in running shoes but also in the unity of community. This October Eswatini runs together.



The Nkonyeni green escape

...Discover your golden moment



The accommodation is built in nature and with nature in mind, providing serene retreats.

NKONYENI Lodge and Golf Estate offers an adventure unlike any other in southern Africa. More than just a destination, Nkonyeni is committed to creating ‘golden moments’, those unforgettable experiences where luxury, nature and adventure perfectly align. Our unique positioning in the Kingdom of Eswatini, a country celebrated for its rich culture and unparalleled

biodiversity, allows us to offer an array of world-class activities, all within the estate’s boundaries.

The estate is home to a world-class championship golf course, designed to challenge and delight players while offering stunning views of the surrounding bushveld. But the exploration doesn’t stop at the 18th hole. Nkonyeni is a haven for eco activities and

cultural immersion, inviting guests to explore the pristine environment and deep heritage.

Guests can delve into our expansive 400-hectare game reserve, home to over 200 species of birds and diverse wildlife, showcasing our deep commitment to conservation and preservation of the bushveld’s rich biodiversity.

Experiences that highlight our

natural assets and cultural depth include:

- **Nkonyeni Golf Cart Drive:** A scenic, relaxed tour ideal for soaking up the estate’s beauty at your own pace.
- **Bushveld Golf Cart Tour:** A guided, intimate exploration deep into the bushveld and the estate to observe wildlife, indigenous flora and soak in magnificent views.
- **The Great Usuthu Walk:** A breathtaking guided walk along the Usutu River, offering spectacular views and opportunities to discover the Nkonyeni and Eswatini story.
- **Sigcineni Homestead Tour:** A unique cultural experience in the neighbouring Nkonyeni community providing insights into traditional Swati life and history.
- **Taste of Eswatini:** A new culinary and culture immersion experience allowing guests to connect with local heritage through authentic food preparation, dancing and storytelling.
- **Swazi Hike:** Guided excursions that blend physical activity with nature immersion, customised for different fitness levels.

The accommodation is built in nature and with nature in mind, providing serene retreats. It also feature two exceptional restaurants: Bushbaby for breakfast and light meals and Bunkers Restaurant for light meals, lunch and dinner.

For corporate needs, the conference and events venue and Nkonyeni Trailblazer Teambuilding programmes leverage the unique environment to foster collaboration and leadership.

This journey through nature and culture defines The Nkonyeni Green Escape. Every carefully crafted activity, mea, and stay culminates in a truly golden, unforgettable Moment, cementing our position as Eswatini’s premier luxury and adventure destination.

Call (+268)78024736 or email: info@nkonyenilodge.com to book your green escape.





**NKONYENI
GREEN ESCAPE**

Nature, Community, Culture & Adventure Tours

50% DISCOUNT

CODE: NKGREEN

ON ACCOMMODATION (MON-THURS)



WWW.NKONYENI.CO.ZA



Call: (+268)78024736
email: info@nkonyenilodge.com

3 reasons to visit Shewula



NESTLED in the breathtaking landscapes of Eswatini, Shewula Mountain Camp offers an enchanting escape for those seeking adventure and tranquillity. Here are three compelling reasons to pack your bags and make this hidden gem your next travel destination.

1. Awe-Inspiring Scenery

Shewula Mountain Camp boasts some of the most stunning vistas in the region. Perched high above the lush valleys below the camp offers sweeping views of the undulating hills and vibrant landscapes. Every sunrise paints the sky in shades of orange and pink while the sunsets create a magnificent canvas of colours that enchant and inspire. Nature lovers will find countless opportunities for photography hiking and simply soaking in the breathtaking surroundings.

2. Authentic Cultural Experience

Immerse yourself in the rich culture of Eswatini during your stay at Shewula Mountain Camp. The camp is actively involved in the community allowing visitors to engage with local traditions and attend cultural performances. From learning about traditional crafts to enjoying local cuisine you will gain a deeper understanding of the Swati way of life. The warm hospitality of the local community makes every guest feel at home enhancing your



overall experience.

3. Eco-Friendly Adventure

At Shewula Mountain Camp sustainability is at the heart of everything they do. Surrounded by pristine nature you can participate in various eco-friendly activities such as guided nature walks and bird watching. The camp prioritises conservation efforts ensuring that your visit leaves a positive impact on the environment and the local community. Experi-

ence the thrill of adventure while contributing to the preservation of this stunning habitat.

Shewula Mountain Camp is more than just a destination; it's an invitation to explore appreciate and connect. With its breathtaking views authentic cultural interactions and commitment to sustainability it promises an unforgettable adventure that will linger in your memories long after you leave. Start planning your visit today and discover the magic of Shewula for yourself!



Are you ready for a sangoma visit?




If you are lucky your culture tour will include a dance by Lutsango.



These young boys are a marvel to watch as they dance to the rhythm of drums and traditional songs. Dressed in cultural attire, their energy and pride shine brilliantly under the beautiful sky.





Experience the traditional Swazi lifestyle in a beautiful natural setting.

- Nature walks
- Culture dance
- Sangoma visit
- Swazi cuisine
- Accommodation

Call us and feel free to ask or make a reservation:
+268 76793039/+268 76051160

Cinema with a cause

...SAWS brings Avatar to the Big Screen for Animal Welfare



SAVE THE DATES

- 1.October 9, 2025 – Avatar: The Way of Water**
- 2.January 1, 2026: Avatar: Fire and Ash**

FILM lovers, conservationists and animal advocates have the chance to come together this October for a night where cinema meets compassion. SAWS Animal Welfare is hosting a special fundraising screening of Avatar: The Way of Water at Movie Zone Cinemas in Ezulwini on October 9, 2025. The event promises not only a breathtaking cinematic experience but also the opportunity to make a tangible difference in the lives of Eswatini's most vulnerable animals.

Every ticket tells story

By purchasing a ticket, guests contribute directly to feeding, sheltering and caring for abandoned cats and dogs at SAWS centres in Mbabane and Manzini. The organisation, a registered non-profit, relies solely on donations and volunteers to rescue,



protect and re-home countless animals who would otherwise be left without hope. Each seat filled represents more than just a cinema-goer – it represents a meal, a safe night's sleep, and a second chance for an animal in need.

Epic film with deeper meaning

The choice of film could not be more fitting. Directed by Academy Award-winner James Cameron, Avatar: The Way of Water immerses audiences in the vast oceans of Pandora with extraordinary underwater

cinematography and heartfelt storytelling. Following the journey of the Sully family as they confront both natural wonder and human conflict, the film mirrors themes of guardianship, survival and respect for all living beings. With standout performances from Sam Worthington, Zoe Saldana, Sigourney Weaver and Kate Winslet, it is an unmissable experience that resonates well beyond the screen.

Next adventure

Adding to the anticipation, the fundraiser also serves as a prelude to SAWS' next cinematic event. On New Year's Day, the organisation will host another screening featuring Avatar: Fire and Ash, ensuring that the bond between film and animal welfare continues into 2026.

Join the cause, enjoy the magic

Tickets are priced at E62 for adults and E48 for under-16s, available at Movie Zone Cinemas, SAWS offices in Mbabane and Manzini, and through SAWS Committee Members.

So why not indulge in an evening of stunning visuals and moving storytelling while knowing your ticket has real impact?

Go for the movie. Stay for the cause. Together, with SAWS, create a brighter future for the animals of Eswatini.



EXPLORE ESWATINI

HORSE RIDING

- E100 per lap
- E220 for 10 minutes

CALL 78038838

PAINT-BALLING

- E100 for 25 bullets
- E150 for 50 bullets

CALL 78038838

Travel Insurance

TRAVEL INSURANCE

Cover available for world-wide leisure and business travel. Get a Quote in 30 minutes

www.travelmelula.com

RE-DISCOVER ESWATINI THE WANDERLUST

TO BE FEATURED HERE CALL 7986 1147

Gears, Guns and Gills

Adventure awaits at Treetops

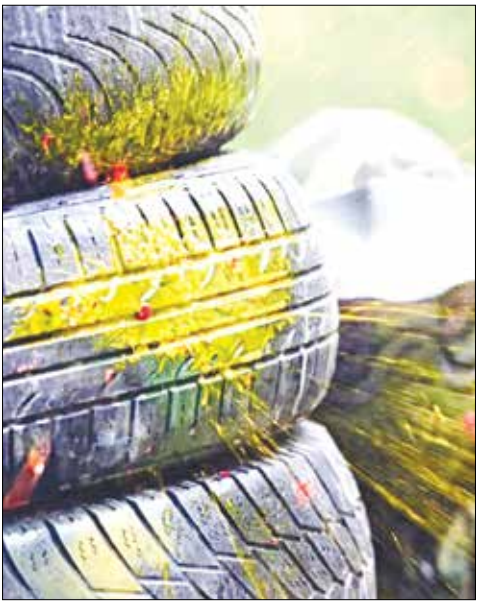
SPRING has sprung at Treetops Game Resort and with it comes a new wave of adventure. Set along the Big Bend–Lukhula Road, this serene escape is fast becoming one of Eswatini’s most dynamic leisure and teambuilding destinations. Here, the promise of fresh air, rolling landscapes and high-octane fun converge in one unforgettable setting.

Quad Biking: Roam the Ranch

For those who crave speed and rugged trails, quad biking at Treetops is pure exhilaration. On nimble Suzuki Quadrunner 250s, guided rides carve through the ranch’s sweeping terrain, offering both seasoned riders and first-timers the thrill of open-air exploration.

Paintball: Battle it out

Adrenaline takes centre stage in the paintball arena. Duck, dive and strategise as your team fights for victory in fast-paced matches powered by reliable compressed air markers. It’s camaraderie,



competition and laughter all rolled into one.

Fishing: Cast away your worries

Balance the energy with a tranquil moment at the water’s edge. Tilapia and local fish await in Treetops’ quiet fishing spots — perfect for those who prefer their adventure served with serenity.

Beyond the action, Treetops excels at indulgence

and comfort. The resort’s accommodation blends rustic charm with modern convenience, while its spa invites guests to unwind with rejuvenating treatments; currently at a 20 per cent discount for winter. A lively restaurant tempts with hearty meals, and the versatile conferencing facilities make it an ideal spot for corporate retreats. From weddings to private celebrations, Treetops also

offers bespoke events spaces, ensuring every gathering is set against an unforgettable natural backdrop.

With gears, guns and gills now part of the offering, Treetops Game Resort has crafted the perfect balance of thrill and tranquillity. Whether you come for adventure, relaxation or celebration, one thing is certain — spring at Treetops is not to be missed.



Exploring this resort on a quad bike will be so exciting! Imagine the thrill of tackling the challenging trails and getting up close to nature.

TREETOPS GAME RESORT

Spring HAS Sprung

- Quad bikes
- Paintball
- Swimming
- Accommodation
- Spa
- Conferencing
- Restaurant
- Events

QUAD BIKE E250^{/30 MIN}

PAINTBALL E200

FOR MORE INFO
7808 0801
treetops@madlamini.co.sz

TREE TOPS
GAME RESORT

[f](#) [x](#) [in](#) [treetopsgameresort](#)

Visit Sandlane Rock Paintings

...Hidden glimpse into ancient san life

TUCKED away near the Sandlane Border Post, in Eswatini’s western reaches, lies one of the country’s lesser-known cultural treasures: the Sandlane Rock Paintings. Now officially listed on the national monument register, these ancient artworks offer a rare and intimate window into the lives and spiritual world of the San people, the region’s earliest inhabitants.

Comparable in style to the celebrated rock art found in South Africa’s Drakensberg and Lesotho, the Sandlane site features intricate red ochre paintings of animals, human figures and symbolic scenes. You’ll find depictions of hunting parties, dancing rituals, battle formations and more, etched into the rock face by hands long gone, but not forgotten.

Fragile heritage

The paintings, like many examples of rock art across southern Africa, have faded over time, partly due to natural exposure, but also from well-meaning visitors. For years, travellers were encouraged to throw water on the rock to make the images clearer for photography, a task often assisted by the senior woman of a nearby homestead. Sadly, this practice contributed to the erosion of key features. A once-prominent dark red ‘sunburst’ motif, photographed in 1958, has since disappeared.



One intriguing element at Sandlane is a pair of animals identified by locals as ‘donkeys’. However, scholars believe they may actually be zebra or even the now-extinct quagga.

Despite the fading, many figures remain identifiable. Animal forms, mainly small to medium-sized antelope like vaal rhebok, feature heavily. Some appear to face off in opposing directions, giving a sense of movement and life to the scenes.

Mysteries in the rock

One intriguing element at Sandlane is a pair of animals identified by locals as ‘donkeys’. However, scholars believe they may actually

be zebra or even the now-extinct quagga. Positioned among antelope and a procession of human figures, their inclusion could hint at unique regional variations in Eswatini’s rock art. Just as the blue wildebeest at Nsangwini defies known Bushman mythology, these figures challenge assumptions about which animals held symbolic meaning for the San.

As for the human figures, many remain enigmatic. Aside from a striking line of ‘males in procession’, most are hard to distinguish, though they’re thought to represent trance or initiation

dances; key rituals in San spiritual practice.

Why Go?

Visiting the Sandlane Rock Paintings is less about ticking off a landmark and more about standing in quiet reflection before the marks of a people whose legacy lives on through the stone. It’s a moment of connection across time, culture and landscape and a chance to experience Eswatini’s deep and complex history in an unforgettable setting.

Versatile venue for stays and events

...Matsapha Inn

WELCOME to Matsapha Inn, your perfect retreat nestled in the heart of one of Eswatini’s busiest business hubs, Matsapha! There, you can enjoy the perfect blend of tranquility and accessibility. Picture yourself in a serene setting, where a peaceful stay is just moments away from the vibrant commercial activities the area has to offer.

At Matsapha Inn, convenience is

key! Their prime location makes it easy for you to explore nearby attractions and connect to major transport links. Whether you’re travelling for business or leisure, you’ll find yourself just 29km from Ezulwini and a quick 27.8 km from Mbabane via MR3.

Matsapha Inn is also a versatile venue where you can host your events. Be it a conferencing event, wedding, birthday party or any other – the spa-



cious hall can be transformed to your dreams as per your party theme. If you like outdoor events, then their beautiful garden will do. Their friendly and professional staff is always willing to go the extra mile for guests.

“...at Matsapha Inn, every stay feels like a refreshing escape—where modern comforts, warm hospitality, and a convenient location come together in perfect harmony...”



Matsapha Inn offers cosiness and convenience; ease access to tourist attractions.





MATSAPHA INN

COMFORT AND CONVENIENCE:

Air-Conditioned Rooms, Breakfast, Free Wi-Fi, and More—Just Steps from Dining and Shopping!

- ✓ Single & Double air-conditioned rooms
- ✓ Tea/Coffee in room
- ✓ Breakfast Included
- ✓ Free Wi-Fi
- ✓ Ample and Secure Parking
- ✓ Cash Refreshments
- ✓ Conference facilities
- ✓ Outdoor venue
- ✓ 24hr Security
- ✓ Convenient location close to all amenities



We are located just 800m from Mahhala Shopping Complex & Robs Total Filling Stations. Nando's, Chicken Inn, Galitos KFC & JK's restaurants in vicinity.

DELIVERY SERVICE ON REQUEST.

Tel: +268 35601793 | +268 78600820 | matsaphainn@realnet.co.sz

Art Stop ...Yebo Art Gallery

YEBO Art Gallery was established by local artists in 2010 and to date has had 65 exhibitions featuring a wide variety of contemporary artwork by the best emerging and professional artists in Eswatini. The Ezulwini art gallery also has a workshop area where the unique Yebo range of tablecloths, T-shirts, wallhangings etc, are screen-printed by hand.

The Ezulwini and Ngwenya gallery shops have their full range of products from magnets and colouring books to table runners and tablecloths and Yebo partners with DHL to pack and ship art globally. Yebo Art Gallery is an amazing creative experience you don't want to miss!

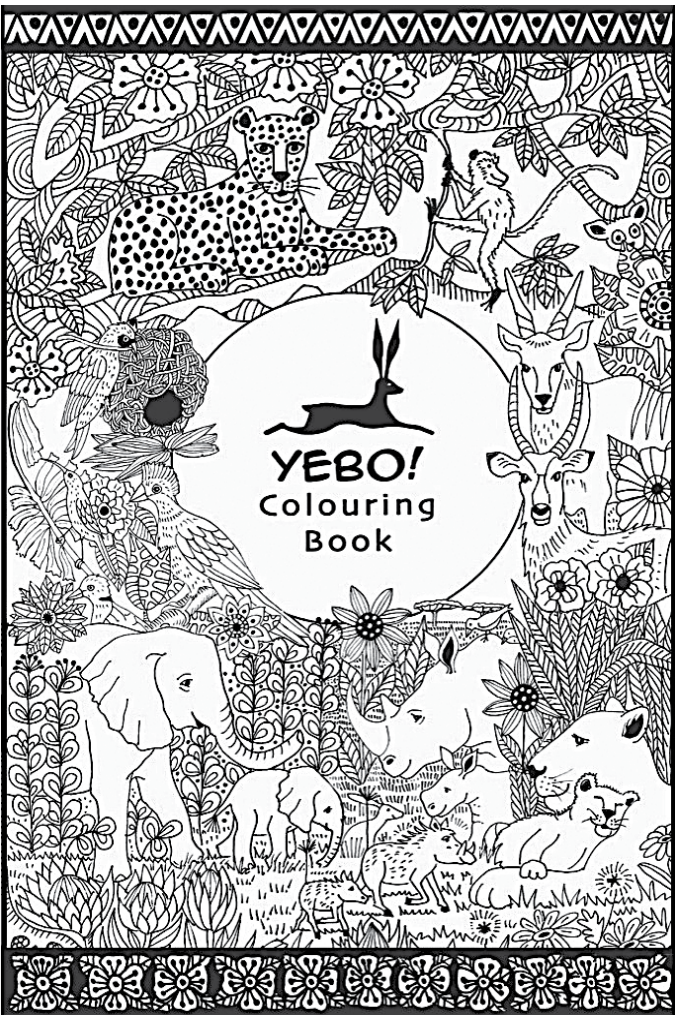
Discover the captivating beauty of Eswatini's art scene through this remarkable sculpture. A masterful depiction of a figure holding a metal object, it reflects the intricate craftsmanship and deep cultural significance behind every piece. This piece is called *Share Your Smoke* by Fela Dlamini.



Step into Yebo Art Gallery and discover art that stuns, inspires and tells Eswatini's story.



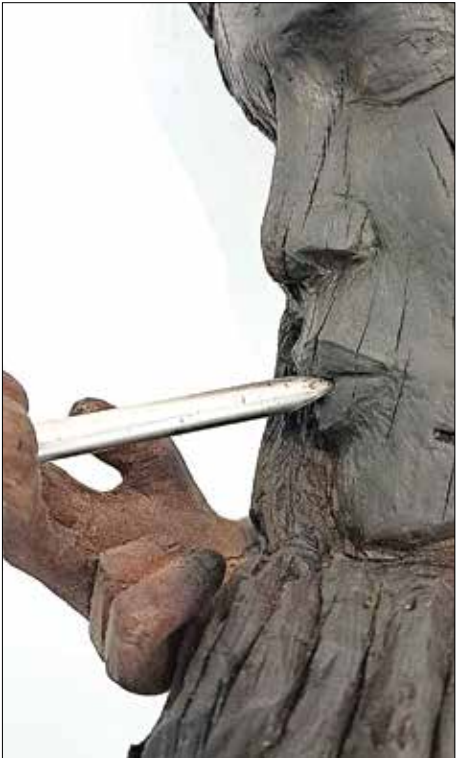
Dystopian Reality by Solunathi Ndlovukazi
'This work reflects on the fragile balance between innovation and ruin in an age ruled by technology. It imagines a world where progress and destruction unfold hand in hand—where the tools that promise advancement also carry the weight of collapse. 'Dystopian Reality' captures the unease of our times, asking whether humanity is creating its future, or dismantling it.



Colouring book cover BW: Experience the vibrant world of Eswatini through this colouring book, featuring beautifully illustrated animals and plants. Let your creativity flow as you bring these artworks to life, while celebrating the rich biodiversity.



Rising above the circles by Thabo Lukhele.



CONTEMPORARY ART BY LOCAL ARTISTS

A SHOP WITH A UNIQUE RANGE OF TEXTILES SCREEN-PRINTED BY HAND AT THE GALLERY WORKSHOP

VISIT THE MOST CREATIVE SPACE IN ESWATINI!!

OPEN MON TO FRI FROM 9 - 5PM

SAT FROM 9 - 1PM

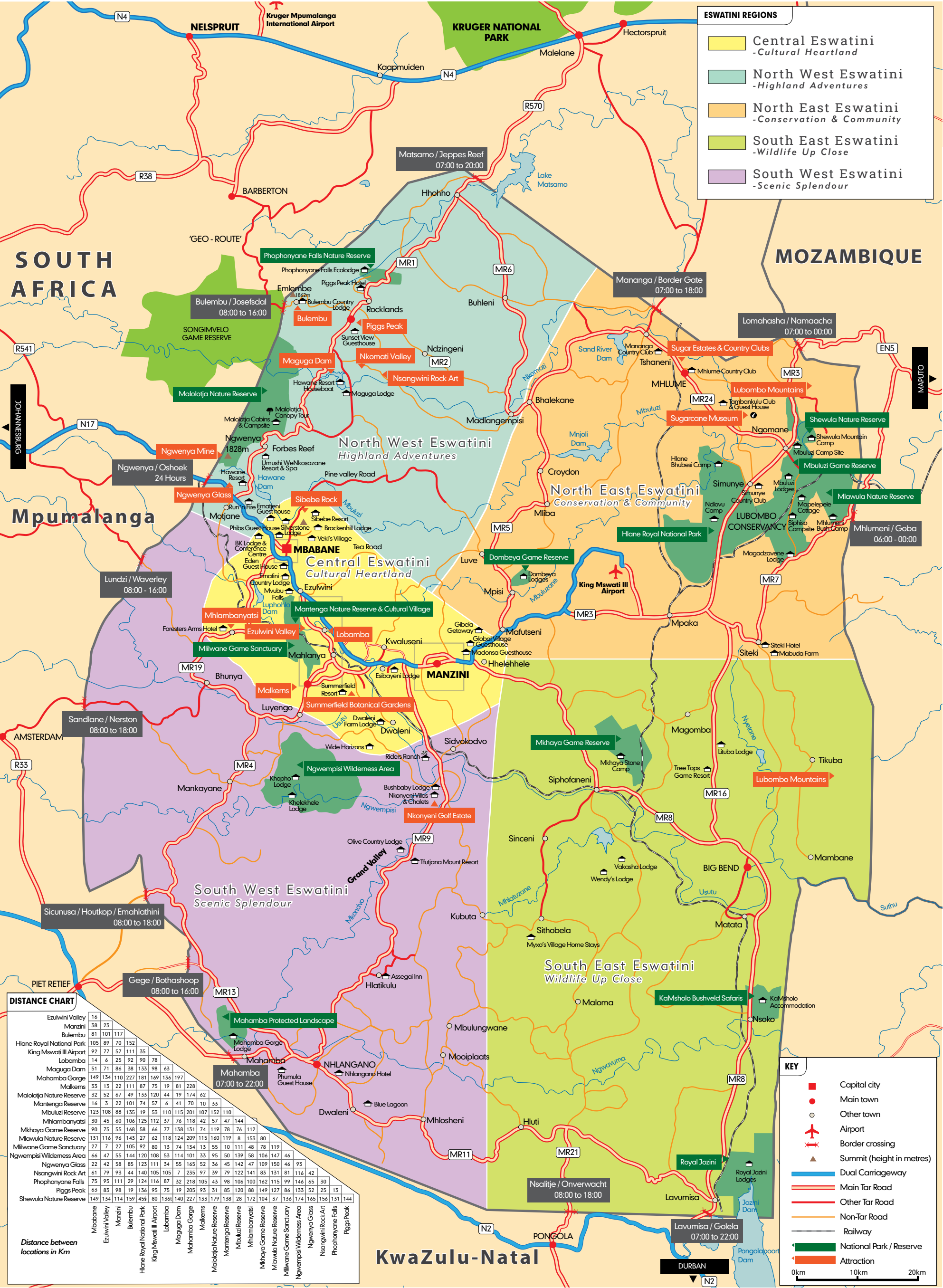
MPUMALANGA CRESCENT IN EZULWINI

WWW.YEBOARTGALLERY.COM

WE ALSO HAVE A SHOP AT NGWENYA GLASS THAT'S OPEN 7 DAYS A WEEK, 8AM - 4PM!

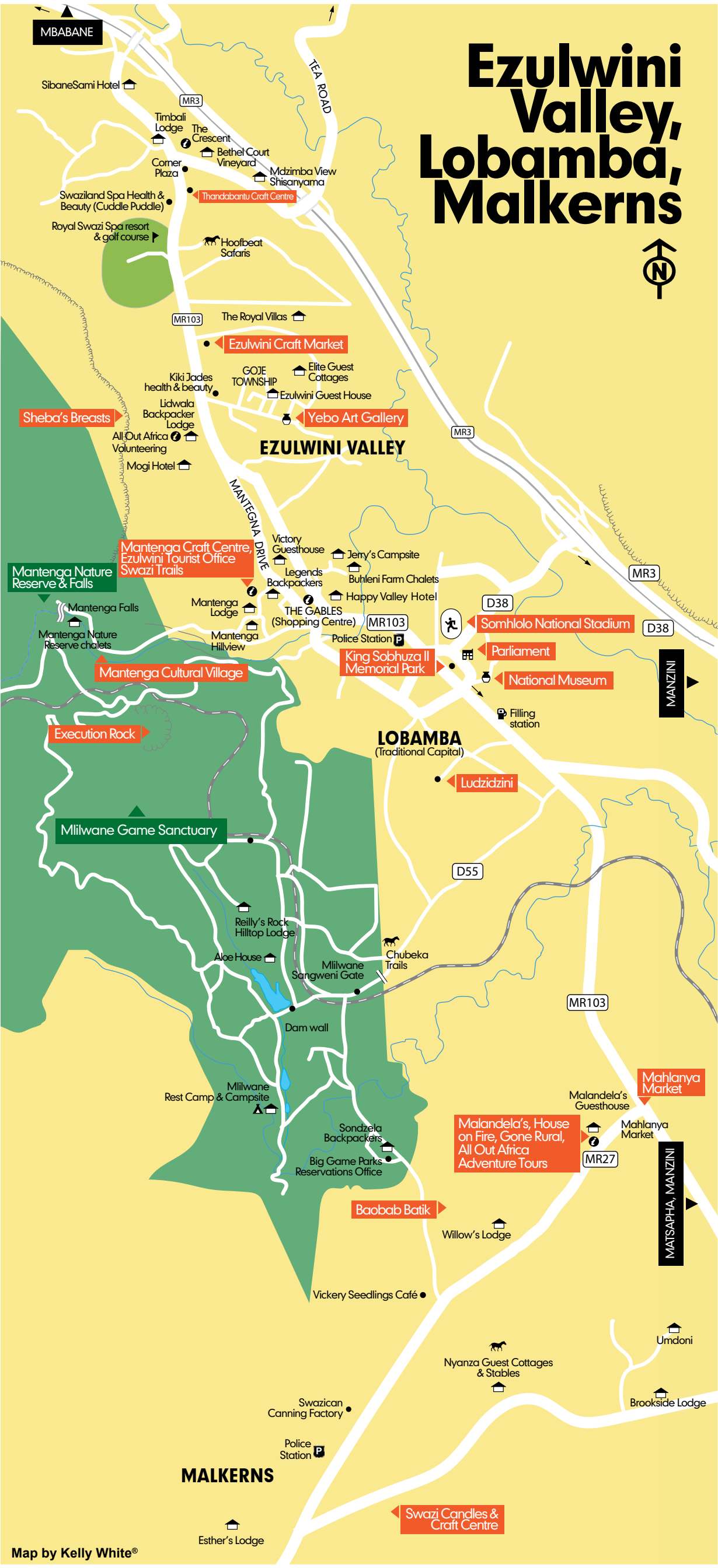
YEBOARTDESIGN

+268 7914 6951



Umhlanga 2025

...moments you missed





GENERAL INFORMATION

TODAY'S BANKNOTES IN ESWATINI:
PRINTER: GIESECKE & DEVRIENT-GERMANY



10 EMALANGENI (US\$0.54)



20 EMALANGENI (US\$1.07)



50 EMALANGENI (US\$2.69)



100 EMALANGENI (US\$5.37)



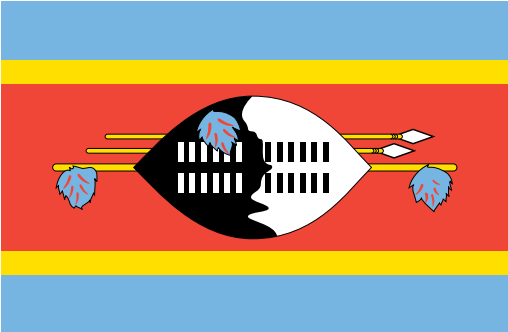
200 EMALANGENI (US\$10.75)

OUR COINS



The New Eswatini Coins currently in circulation.

THE ESWATINI FLAG



PANTONE 542 C
Process: C = 51, M = 16
Y = 0, K = 0



PANTONE 803 C
Process: C = 0, M = 9
Y = 100, K = 0



WHITE



PANTONE BLACK

Process: C = 0, M = 0
Y = 0, K = 100



PANTONE 157 C

Process: C = 0, M = 88
Y = 85, K = 0

The flag is rectangular, and its colors are red, blue and yellow. Each of these colors has a meaning:

RED: Stands for the battles of the past.

BLUE: Stands for peace and stability.

YELLOW: Stands for the resources.

The flag also has a picture of a shield and spear. These two symbols stand for protection of our country from enemies. The shield is black and white to show that black and white people live together peacefully in eSwatini.

THE SISWATI CALENDAR

- January** – Bhimbidwane (everybody satisfied)
- February** – Indlovana (little elephant)
- March** – Indlovulenkulu (big elephant)
- April** – Mabasa (kubasa-to make fire)
- May** – Inkhwekhwele (pick up everything you have)
- June** – Inhlaba (Aloe blossoms)
- July** – Kholwane (Hawk that nests in the moon)
- August** – Ingci (small wolf breeds in this month)
- September** – Inyoni (special bird mates)
- October** – Imphala (Antelope bears its young)
- November** – Lweti (star to see when women begin work early also Inkhosi lencane (little chief)
- December** – Ingongoni/ Mavulangamithi (Buffaloe month/ to swallow pickings of teeth) also Inkhosi Lenkhulu (big chief)

BORDER HOURS



Mhlumeni/ Goba Border	Open 24hrs
Lomasha/ Namaacha	Open 07:00hrs – 22:00hrs
Ngwenya/ Oshoek Border	Open 24:00hrs
Lavumisa/ Golela Border	Open 07:00hrs – 22:00hrs
Mahamba Border	Open 07:00hrs – 22:00hrs
Mananga Border	Open 08:00hrs – 18:00hrs
Matsamo/ Jeppe's Reef	Open 08:00hrs – 20:00hrs
Nsalitshe/ Onverwacht	Open 08:00hrs – 18:00hrs
Sandlane/ Nerston	Open 08:00hrs – 18:00hrs
Sichunusa/ Houdkop	Open 08:00hrs – 18:00hrs

LOCATION

Southern Africa, between Mozambique and South Africa
Geographic coordinates:

- Size:** 26 30 S, 31 30 E
17 364sq km
- Countries border:** 535 km
- Total:**
- Border countries:**
 - Mozambique 105 km,
 - South Africa 430 km
- Lowerst point:** Great Usutu River 21m
- Highest point:** Emlembe 1 862 m

YOUR EMBASSY/CONSULATE IN SD

- Cyprus Consulate: 2404 2650 / 2404 1138
- Danish-Norwigean Consulate: 2404 3547
- Honorary Consul of Finland: 7914 6951/7902 5270
- French Consulate: 2404 3667
- German Liason Off: 2404 3174
- High Commission of India: 2417 1413
- Italian Consulate: 2404 4371
- Mozambique: 2404 3700
- Portugal Consulate: 2404 6780
- Republic of China (Taiwan): 2404 4740/1
- Seychelles Con: 2505 2415
- Singapore High Commission: 2404 2661/2/3
- South Africa: 2404 4651
- Turkish Consulate: 2422 0805
- USA: 24179000

MEDICAL HELP TEL: 7606 0911

Mkhiwa Clinic, Manzini private Hospital, 24h casualty & emergency, Tel: 2505 9299 or 2505 9293
The Manzini Clinic Tel: 2505 7430
Medisun Clinic , Ezulwini Tel: 2416 2800
The Mbabane Clinic 24th Trauma Care and Laboratory Service Tel: 2404 2423
Dentist: Mbabane Clinic Tel: 2404 2423
Good Shepherd Hospital, Siteki Tel: 2343 4133

ROAD DISTANCES TO ESWATINI (MBABANE) IN KILOMETERS:

- Johannesburg 635 (South Africa)
- Durban 368 (South Africa)
- Richards Bay 368 (South Africa)
- Gaborone 718 (Botswana)
- Maputo 236 (Mocambique)
- Maseru 136 (Lesotho)

TRANSPORT BETWEEN ESWATINI & SA

GETTING to eSwatini apart from traveling by coach with a group is very easy. Busses operate daily between Johannesburg (Sandton and O. R. International Airports) as well as daily flights:

BY AIR:

Airlink eSwatini | Tel. +268 251 86155
swaziairlink@flyairlink.com
www.flyEswatini.com

BUSINESS HOURS & PUBLIC HOLIDAYS:

OFFICE and shop hours are usually 08h00-13h00 and 14h00-17h00 Mondays to Fridays. Bank hours are 08h30-14h30 Mondays to Fridays, 08h30-11h00 on Saturdays.

Post offices are open 08h00-16h00 Mondays to Friday and 08h00-11h00 on Saturdays.

New Year's Day	– 1 January
King's Birthday	– 19 April
National Flag Day	– 25 April
Worker's Day	– 1 May
Umdlhanga Reed Dance Day	– (end of August or early September)
Somhlolo Independence) day	– 6 September
Christmas Day	– 25 December
Boxing Day	– 26 December
December Incwala Day	– (December or early January)

SOME SISWATI WORDS:

Sawubona	Hello
Unjani	How are you
Ngiyaphila	I am fine
Ngiyabonga	Thank you
Wota lapha	Come here
Sikhulekile ekhaya	A Swati way of greeting a home as well as asking for permission to enter.
Sala kahle	Stay well
Hamba kahle	Go well



GENERAL INFORMATION



ADVENTURE

All Out Adventure Tours, Malkerns Tel: 2528 3423
Canopy Tours at Malolotja Nature Reserve, Tel: 2444 3241
Sibebe Rock: Cell: 7670 1667
White Water Rafting, Swazi Trails, Ezulwini Tel: 2416 2180
Paintball, Hoof Beat Cell: 76117655
Paintballing, Khuselwa, Cell: +268 7803 8838
Quad Bikes, Khuselwa Farm, Cell: +268 7803 8838

ART GALLERIES

Yebo Art Gallery, Zulwini Cell: +268 7914 651

BACKPACKERS

Legends Backpackers, Mantenga Tel: 2416 1870
Lidwala Lodge, Ezulwini Tel: 7690 5865
Mlawula Nature Reserve, north of Simunye Tel: 2383 8885
Sondzela Backpackers, Malkerns (Big Game Parks) Tel : +268 2528 1000/1 Cel : 7677 6772

BEAUTY & HEALTH

Maguga Lodge, Maguga Dam Tel: 2437 3975
Nkonyeni Golf Estate Spa Cell: 7602 7749
The George Hotel: Manzini Tel +2505 2260

ACCOMODATION

Big Game Parks, Tel : +268 2528 1000/1 Cell : 7677 6772
Brookside Lodge, Malkerns Tel: 2528 3765/ Cell: +268 76214228
Lebombo Villas, Big Bend Tel: 7603 6585
Malandelas, Malkerns Tel: 2528 3448
Mdzimba View Lodge, Cell: 7841 2930
Phumula Guest House, Nhlangano Tel: 2207 9099
Simunye Club, Simunye Tel: 2328 8894
Matsapha Inn, Cell: +268 7860 0820
Tree Tops Resort, Cell: +268 7808 0801 Email: treetops@madlamini.co.sz

BIRD WATCHING

Buhleni Farm Chalets Tel +268 2416 3505/8
Foresters Arms, Mhlambanyatsi Tel: 2467 4177
Simunye (Big Game Parks) Tel : +268 2528 1000/1 Cell : 7677 6772
KaMsholo Bushveld Safaris, South of Big Bend (Big Game Parks) Tel: +268 2528 1000/1 Cell: 7677 6772
Mananga Country Lodge Tel 2323 2404
Malolotja Nature Reserve, Tel 2444 3241
Mkhaya Game Reserve, Phuzamoya (Big Game Parks) Tel: +268 2528 1000/1 Cell: 7677 6772
Mlawula Nature Reserve, north of Simunye Tel: 2383 8885
Mliwane Game Sanctuary, Malkerns (Big Game Parks) Tel: +268 2528 1000/1 Cell: 7677 6772
Nkonyeni Golf Estate Tel: 2540 0024/5

Phumula Guest House, Nhlangano Tel: 2207 9099
Shield Guesthouse Tel: 2404 6072/ 7652 4021
Mhlosinga Nature Reserve Tel: +268 76300526
Royal Jozini +268 2550 4614/ +268 7680 7047

BUSHMAN PAINTING

Nsangwini Rock Shelter Tel: 7619 2665
Hhelehhele Rock Art:

CAMPING

Buhleni Farm Chalets Tel: +268 2416 3505/8
Brookside Lodge, Malkerns Tel: 2528 3765/ Cell: +268 76214228
All OUT Adventure Tours, Malkerns Tel: 2528 3423
Shewula Mountain camp and nature reserve: Tel: 2343 4524/ Cell 7605 1160/7603 1931
Mhlosinga Nature Reserve Tel: +268 76300526

CARAVAN SITES

Buhleni Farm Chalets Tel +268 2416 3505/8
Hlane Royal National Park Tel : +268 2528 1000/1 Cell : 7677 6772
KaMsholo Bushveld Safaris, South of Big Bend (Big Game Parks) Tel : +268 2528 1000/1 Cell : 7677 6772

CAVING

Swazi Trails Tel: 2416 2180

CRAFTS & ARTS

Gone Rural, Malkerns Tel: 2550 4936/ 7615 2736
Kwaziswazi, Malkerns Tel: 2528 3110
Ngwenya Glass, Tel: 2442 4053
Rainbow Angels Tel: 24162508
Swazi Candles, Malkerns Tel: 2528 3219

CULTURE

King Sobhuza II Memorial Park, ENTCLobamba Tel: 2416 2131
Maguga Lodge Tel: 2437 3975
Mantenga Cultural Village Tel:2416 1151
Sibebe Resort, Cell: +268 7804 9560
Shewula Mountain camp and nature reserve: Tel: 2343 4524/ Cell 7605 1160/ 7603 1931

FISHING

Royal Jozini +268 2550 4614/ +268 7680 7047
Foresters Arms, Mhlambanyatsi Tel: 2467 4177
Guided Fishing Tours Tiger Fishing at van Eck Dam +268 7602 5482
Maguga Dam Tel: 2437 3975
Mananga Country Lodge Tel 2323 2404
Mhlosinga Nature Reserve Tel: +268 76300526

GAME VIEWING

KaMsholo Bushveld Safaris, South of Big Bend (Big Game Parks) Tel: +268 2528 1000/1 Cell: 7677 6772

Mlawula Nature Reserve Tel: +268 2383 8885
Mananga Country Lodge Tel 2323 2404
Malolotja Nature Reserve Tel: 2444 3241 or 7660 6755
Mkhaya Game Reserve, Phuzamoya (Big Game Parks) Tel: +268 2528 1000/1 Cell: 7677 6772
Mliwane Game Sanctuary, Malkerns (Big Game Parks) Tel: +268 2528 1000/1 Cell: 7677 6772
Shewula Mountain camp and nature reserve: Tel: 2343 4524/ Cell 7605 1160/ 7603 1931
Brookside Lodge, Malkerns Tel: 2528 3765/ Cell: +268 76214228
Foresters Arms, Mhlambanyatsi Tel: 2467 4177
Nkonyeni Golf Estate Tel: 2540 0024/5
Mananga Country Lodge Tel 2323 2404
Simunye Country Club Tel: 2383 8894
Mhlosinga Nature Reserve Tel: +268 76300526
Matsapha Tel: 2518 4693
Royal Jozini +268 2550 4614/ +268 7680 7047

HORSE RIDING

Chubeka Trails, at Mliwane Game Sanctuary Tel : +268 2528 1000/1 Cell : 7677 6772
Foresters Arms, Mhlambanyatsi Tel: 2467 4177
Hoof beat, Horse riding, Paintball Cell: 76117655.
Khuselwa, Manzini Cell: +268 7803 8838

HOTELS

Maguga Lodge, Maguga Dam Tel: 2437 3975
Nkonyeni Golf Estate Tel: 2540 0024/5 Phumula Guest House, Nhlangano Tel: 2207 9099
The George Hotel: Manzini Tel +2505 2260

LODGES

Brookside Lodge, Malkerns Tel: 2528 3765/ Cell: +268 76214228
Buhleni Farm Chalets Tel 2416 3505/8 Te: 2404 3387/ 7608 6229
Maguga Lodge, Maguga Dam Tel: 2437 3975
Mahamba Gorge Lodge Cell 7617 9880
Mantenga Cultural Village, Tel: 2416 1101/2416 1151
Mananga Country Lodge Tel 2323 2404
Manzini Lodge Tel: 2505 5382
Mbuluzi Nature Reserve North of Simunye Tel: 2383 8861/2
Mhlume Country club & lodge: Tel 2313 4350/ 2313 4777
Shield Guesthouse Tel: 2404 6072/ 7652 4021
Sibebe resort Tel: 3402 0406/76088228
Royal Jozini +268 2550 4614 +268 7680 7047

MUSEUMS

Bulembu Museum www.bulembu.org www.sntc.org.sz
King Sobhuza II Memorial Park www.sntc.org.sz
Mantenga Cultural Village www.sntc.org.sz Sugarcane Museum +268 23737334 / www.sugarcanemuseum.com

RESTAURANTS

Velvet Monkey, Zulwini, Cell: +268 7663 4822
Esphino, Siteki, Cell: +268 7876 0543 Email info.espihno@swazi.net
Mdzimba View Shisanyama, Zulwini, Cell: 7841 2930
email: mdzimbaview@gmail.com Forester's Arms, Mhlambanyatsi Tel: 2467 4177
Sambane, Malkerns Tel: 2528 3466
Simunye Country Club, Simunye, Tel: 2383 8894
The Calabash: Ezulwini Tel 2416 1187
The George Hotel: Manzini Tel +2505 2260/ 7860 2020

Matsapha Tel: 2518 4693

SELF-CATERING

Big Game Parks, Tel : +268 2528 1000/1 Cel : 7677 6772
Buhleni Farm Chalets Tel +268 2416 3505/8
Veki's, Mbabane Tel: 7603 6396 Mhlosinga Nature Reserve Cabins Tel: 268 7602 5482
Lakeside Tiger Fish Cabins Tel: 268 7822 4905 ins@gmail.com
Royal Jozini +268 2550 4614 +268 7680 7047

TOURIST INFORMATION

All Out at Mandela's Internet Café, Malkerns, Tel: 2528 3423
Dept. of Tourism, Swazi Plaza, Mbabane Ezulwini Tel: 2416 2180
Swazi Trails Tel: 2416 2180

TRAVEL AND TOURS

Wild Hogg Tours, Eddie +268 76047510/79047510

WALKING/HIKING

Simunye (Big Game Parks): +268 2528 1000/1 +268 7677 6772
KaMsholo Bushveld Safaris, South of Big Bend (Big Game Parks) Tel : +268 2528 1000/1 Cell : +7677 6772
Khelekhele Trail Cell: 7631 5308
Maguga Lodge, Maguga Dam Tel: 2437 3975
Maguga view point: Tel:2437 1056/ Cell 7606 5519/7607 1175
Mahamba Gorge Lodge: Cell 7617 9880
Malolotja Nature Reserve Tel: 2444 3241 or 7660 6755
Mananga Country Lodge Tel 2323 2404
Mkhaya Game Reserve, Phuzamoya (Big Game Parks) Tel: +268 2528 1000/1 Cell: 7677 6772
Mlawula Nature Reserve, Tel: 2383 8885
Mliwane Game Sanctuary, Malkerns (Big Game Parks) Tel: +268 2528 1000/1 Cell: 7677 6772
Nkonyeni Golf Estate Tel: 2540 0024/5
Phumula Guest House, Nhlangano Tel: 2207 9099
Sibebe Rock Cell: 7670 1667
Shewula Mountain camp and nature reserve: Tel: 2343 4524/ Cell 7605 1160/ 7603 1931
Royal Jozini +268 2550 4614/ +268 7680 7047

From candles to couture: 5 must-have brands

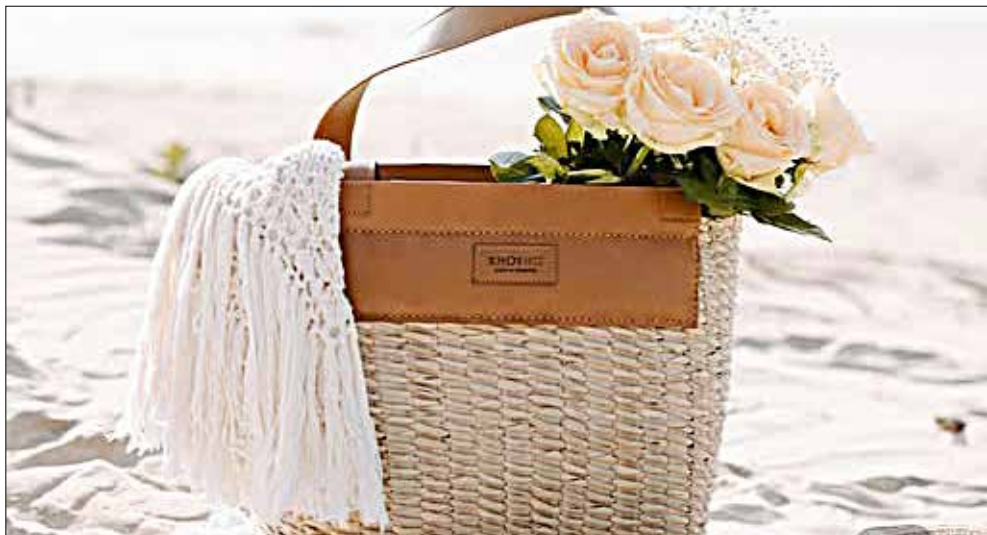
ESWATINI is a Kingdom where culture and craftsmanship intertwine, producing creations that are as beautiful as they are meaningful. For the traveller seeking something authentic to take home, these local brands embody the spirit, skill and heritage of the nation.



Khokho Collection

Meaning ‘great-grandmother’ in siSwati, *Khokho* is a luxury accessories brand working with women weavers from Ntondozi. Their hand-dyed and hand-woven bags, crafted from sisal fibre and *lutindzi* grass, marry traditional artistry with contemporary design. More than just stylish, these pieces provide sustainable opportunities and fair wages for local communities.

The Khokho Collection studio and boutique is located at Malandela’s Farm in Malkerns.



Bringing a touch of floral magic to the beach with handwoven Khokho bag!

Mantsholo Creations

Mantsholo Creations is a woman-owned brand specialising in custom-made leather goods. From finely stitched handbags to wallets and belts, every item reflects meticulous craftsmanship and Eswatini’s design heritage. These timeless accessories are available at select outlets across the country; Malandela’s Farm and Ngwenya Glass Stores.



Tintsaba

Founded in 1985, Tintsaba has become world-renowned for its high-quality sisal baskets, jewellery and homeware. Working with over 1 000 rural women, the brand provides steady income, education and healthcare while producing vibrant designs inspired by the landscapes of Eswatini. Available in Peak Craft Centre in Piggs Peak and Pigg’s Peak Hotel.



Ngwenya Glass

Ngwenya Glass is famous for its enchanting animal figurines and elegant tableware, all handmade from 100 per cent recycled glass. Visitors can watch master artisans at work, transforming discarded materials into objects of beauty while promoting sustainability.



Swazi Candles

Since 1981, Swazi Candles has captivated visitors with its hand-poured creations shaped into animals, geometric forms and bold patterns. Using the mille-fiore technique, each candle is a miniature work of art. Guests can enjoy live demonstrations and take home a piece of Eswatini’s creativity.

Exploring these brands is more than shopping; it is a journey into the heart of Eswatini’s artistry. Each item tells a story of tradition, innovation and community, making them gifts and souvenirs with a soul.



Handmade leather backpacks from Mantsholo Creations: Perfect for your outdoor adventures or city strolls, these beauties are not just stylish but oh-so-functional too. Their products are now available at both the Malandela’s Lifestyle and Ngwenya Glass store!

MANTENGA

LIFESTYLE & CRAFT CENTRE

A Vibrant Destination for Artistry, Community, and Culinary Delights

NESTLED in the heart of Ezulwini, the Mantenga Lifestyle & Craft Centre is more than just a destination; it's an experience that captures the heart of Eswatini, inviting you to explore, indulge, and connect with the rich culture and artistry that makes our land truly special.

Established in 1975 as an aid project to support Swazi handicrafts, this enchanting spot has blossomed into a bustling hub 'Under the Big Tree,' where local artisans and culinary talents come together to create unforgettable experiences.

THE CULINARY ADVENTURE AWAITS

Go on a culinary journey like no other at our food court, where flavours from around the globe come together. Enjoy the unique concept of ordering from various restaurants, allowing you to share a meal while savouring personalised dishes that tantalise your taste buds.

BOMDIA RESTAURANT AND BAKERY:

Indulge in delicious Portuguese meals and breakfasts, perfectly paired with handmade breads and pastries— all crafted in-house.
Contact: +268 762 62905

PIZZA VESUVIO



Relish authentic Italian pizzas and pastas, crafted by Giancarlo, who takes pride in serving guests with warmth and passion.
Contact: +268 7656 7770

THE SMOKE & GRILL



Experience the art of smoked meats, expertly mastered by Sipho Dlamini. Enjoy flavoursome smoked pork, beef, and chicken that will leave you craving more.
Contact: +268 7612 1788

THE WINE BOUTIQUE

Discover a world of exquisite wines and spirits with Lungile Dube-Mot-



sa, who will guide you to expand your palate. Enjoy local draft beer and feel the essence of Eswatini.
Contact: +268 7802 7769 / 7612 2182

HANDCRAFTED TREASURES AWAIT

Explore a rich collection of authentic Swazi crafts, where each piece tells a story of passion and creativity. From intricate beadwork to bold textiles and captivating woodcarvings, the craftsmanship on display is a testament to the vibrant culture of Eswatini.

BENGUNI CRAFTS



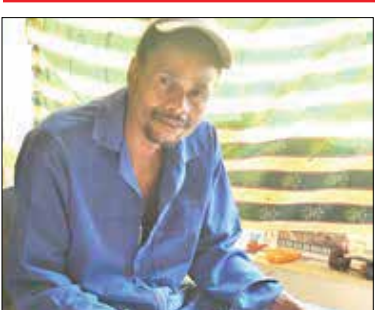
Discover handcrafted products by local artisans, offering a treasure trove of items reminiscent of a traditional Swazi market.
Contact: +268 7657 2148

MASSAI CRAFT



Experience Pan-African art bursting with vibrant colors and funky designs, all hand-painted and stitched by Thandeka. Arrange for after-hours shopping for a truly personal experience.
Contact: +268 7621 1261

RAINBOW ANGELS



Take home beautiful wooden sculptures that make perfect gifts or mementos of your travels, crafted by skilled artisans Acan and Zanele.
Contact: +268 7633 7859

STYLE AND FLAIR FOR EVERYONE

Unleash your personal style with a variety of unique shops showcasing handmade jewelry, leather products, and high-end fashion, all

crafted with care and creativity.

EXPRESS JEWELLERS

Founded by Mr. Mumba Kashiki and his son, their bespoke jewelry pieces incorporate unique materials like giraffe and elephant tail hair.
Contact: +268 7667 3399

ROSE OF SHARON SPACE



Offering Afrocentric handmade leather products, including shoes and handbags sourced from across Southern Africa.
Contact: +268 7669 9126

EULOGIES REGALIA



BKD MAKEUP ARTISTRY

Specialising in luxury bridal makeup services to make your special day unforgettable.
Contact: +268 7696 6076

AURA BEAUTY STUDIO



Where hair care is an art form, specialising in premium hair treatments and wig services.
Contact: +268 7661 8450

SPECIALTY SHOPS A BOLD EXPRESSION OF YOU

For those looking to express their individuality, Mantenga offers specialty services that celebrate your unique style. **By appointment only**



THE DELIGHTFUL ENCHANTMENT

Is a treasure-filled shop full of handmade magic with a distinctly Afro-chic flair. From our signature Jack & Miranda carvings to upcycled



art, sparkling crystals, and curated gifts and hampers, everything is made with heart. We also offer handcrafted jewellery made from leather, wood, seeds, and always finished with stainless steel. Plus, don't miss our fun craft workshops – come explore, create, and be enchanted!
Cell : 76021189

PICTURE THIS

A family-run business specializing in canvas art that celebrates the beauty and rich heritage of Eswatini, turning your treasured memories into stunning works of art.
Contact: +268 7863 8611

AMAHLE

Amahle caters to mothers, families with young children, and environmentally conscious consumers through eco-friendly offerings like wooden toys, organic clothing, and wellness items. By collaborating with local artisans and using sustainable materials, Amahle ensures quality while supporting fair trade practices.
Contact: +268 7669 9126

UMUHLE MBAMBA



Handcrafted classy beaded ear-



rings for the woman who wants to look and feel good. Each piece tells a story and captures the vibrant colourful culture of Eswatini. This in turn evokes emotions of joy for all that interact with the brand.
Contact: +268 7630 4697

THE LOOP – PRE-LOVED,



REFINED STYLE

Step into The Loop and discover fashion that tells a story. From timeless classics to modern must-haves, be styled in pre-loved and refined pieces that are uniquely you.
Cell : 7602 0872

HAPPINESS DESIGNS –TAKE



A BIT OF AFRICA HOME

Stuffed elephants with big personality, vibrant Tshweshwe aprons, and colourful bags for your gadgets — Happiness Designs turns traditional fabric into joyful souvenirs. Wild, wonderful, and proudly local. Find your favourite
Cell : 7833 1190

Mantenga Lifestyle & Craft Centre is not just a place to visit; it's an experience that captures the heart of Eswatini, inviting you to explore, indulge, and connect with the rich culture and artistry that makes our land truly special.
Come and be part of our vibrant community—your adventure awaits!

FOOD COURT :
Italian, Portuguese, meat platters, wine, draught beers, artisanal ice cream

SHOPS: Local Crafts & gifts

OPEN DAILY

Mantenga Drive / Tivakashi Street, Ezulwini

WhatsApp : +268 7613 5866
Instagram : mantengalifestyle

Facebook : mantengacraftandlifestyle

From sunset to sunrise, non-stop energy

...Babalwa M & Daliwonga to Headline IF's Lounge Spring Bash

SPRING in Eswatini is set to bloom with rhythm and colour as South African singer Babalwa M and Amapiano star Daliwonga headline the third annual IF's Lounge Spring Bash.

Babalwa M first rose to prominence with her 2020 EP Bayeke, which showcased her soulful sound and distinctive musical style. Known for her heartfelt lyrics and smooth melodies, she has become an influential figure in the South African music scene, captivating a growing fan base. Daliwonga, meanwhile, has carved out his place as one of Amapiano's most celebrated voices, with chart-topping hits such as Abo Mvelo and Izolo.

Excitement was high following the announcement of Daliwonga as part of the phase one line-up, and with the addition of Babalwa M in phase two it has risen even further.

These two artists will perform at IF's Lounge in Manzini on October 25, 2025. The event promises to be one of the kingdom's most vibrant celebrations of the season, drawing music lovers from across the country and beyond.

Their performance is expected to set the tone for an unforgettable all-day festival that captures the essence of spring.

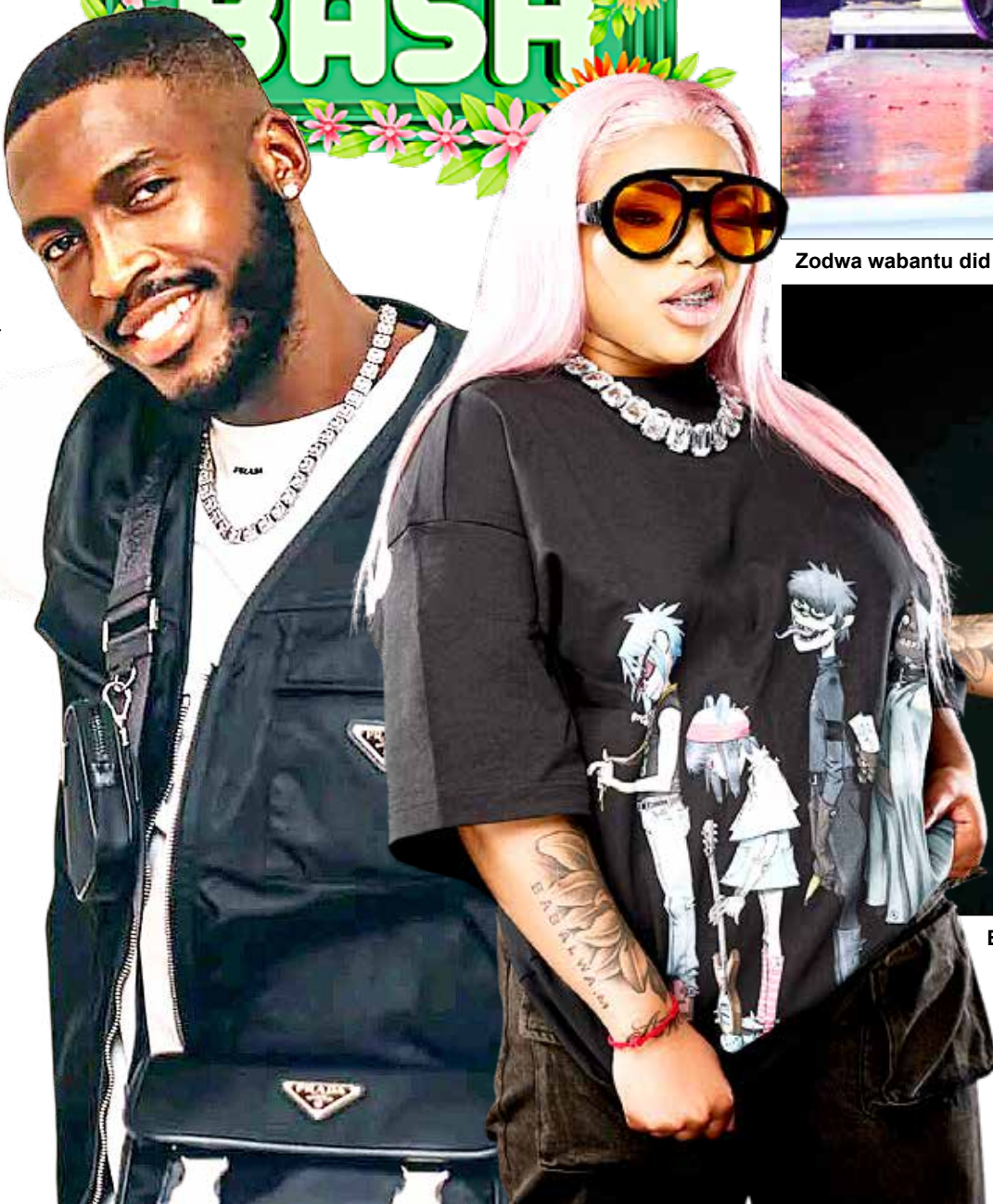
The diverse phase one line-up brings together an impressive mix of regional and home-grown

talent. Acts including Rina, !Sooks, Acoustic Soul, Zwile, Taiiro, Yamkela and The Best Duo will ensure a lively soundtrack that flows from midday into the early hours.

Phase two adds even more variety with Babalwa M, Jay Sax, Linda Dlamini, Mayhem, Thick B Obsession, Mistosoul and Rekorder confirmed to perform.

MistoSoul, entertainment manager at IF's Lounge, shared the team's anticipation: "We are thrilled to bring together both international and local artists ensuring there is something for everyone. This year's Spring Bash is set to be the most exciting edition yet."

Building on the momentum of last year's edition, which featured South African stars Nkosazana Daughter and Russell Zuma, this year's Spring Bash is positioned as an upmarket outdoor experience. Beyond the music, guests can look forward to curated food offerings and fashion that embraces the season's energy. Revellers are encouraged to dress in bold spring colours to match the lively atmosphere.



Zodwa wabantu did her thing in the first edition of Spring Bash.



Babalwa M.

With Babalwa M and Daliwonga leading the bill, organisers are urging fans to secure tickets early to avoid

missing out. Tickets are on sale at major outlets across the country including TotalEnergies Gardens in Mbabane, Puma Garage GV opposite Central in Manzini, MTN Shop Varsity Corner in Matsapha and MTN E-TOP outlets in Pigg's Peak, Siteki, Simunye, Nhlangano and Big Bend. Stalls for vendors during the event are also available.



EXPERIENCES FOR ALL

**MUSIC
FASHION
LIFESTYLE
FOOD
MEMORIES**

25 OCTOBER 2025

VENUE: IF'S LOUNGE MANZINI (MONEINI, CARSON BUILDING)

TICKET OUTLETS:

MBABANE: TOTAL ENERGIES GARDENS (NEXT TO HILTON HOTEL) | MTN E-TOP (NEW MALL) | MTN E-TOP (WOODLANDS) | **EZULWINI:** TOTAL EZULWINI (NEXT TO EPH) | **MANZINI:** PUMA GARAGE GV OPP CENTRAL | ENGINE INTERCHANGE NAZARENE | MTN E-TOP BHUNU MALL | CARDO SQUARE NOWANE PARK (MTN) | **MATSAPHA:** MTN E-TOP LIFESTYLE | MTN SHOP VARSITY CORNER (KWALUSENI) | **NHLANGANO:** MTN E-TOP NEXT TO BOXER | MTN E-TOP OPP SHOPRITE | **PIGGS PEAK:** MTN E-TOP (BUS RANK) | **SITEKI:** MTN E-TOP | **MPAKA:** MTN E-TOP | **BUHLINI:** MITRA FILLING STATION | **MHLUME:** PICK YOURS | **SIMUNYE:** MTN E-TOP | **SIKHUPHE:** MTN E-TOP KM3 AIRPORT | **SIPHOFANENI:** MTN SHOP (NEW PLAZA) | **BIG BEND:** MTN E-TOP MATATA

ALSO AVAILABLE AT **IF'S LOUNGE MBABANE & MANZINI**

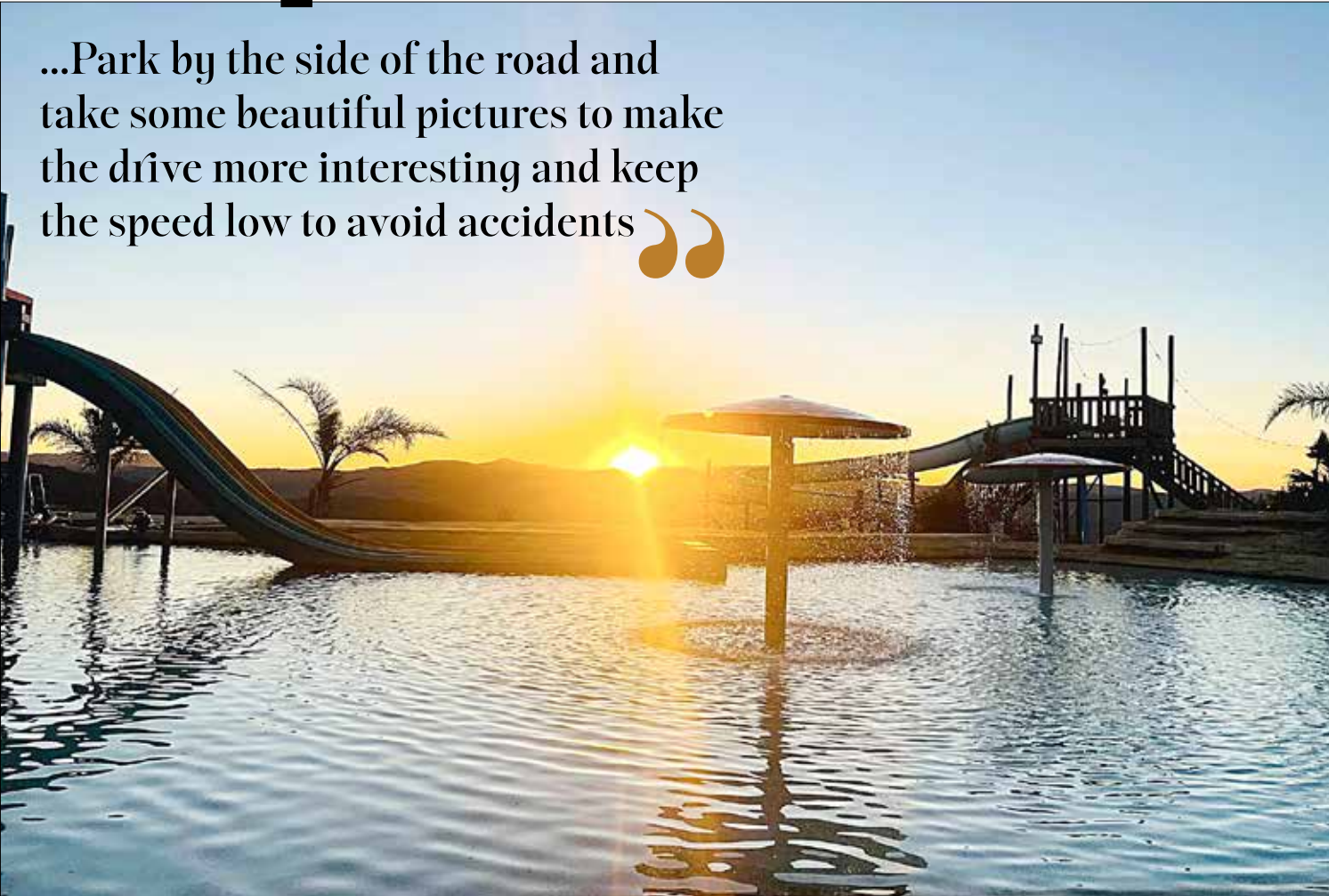
GEN PRESALE: E200 | AT THE GATE: E250 | VIP: E400

ONLINE TICKET: <https://m.mojaticket.com/#/event/17754>

A perfect escape in the mountains



Sibhaca Dance performance at Sibebe Cultural Village.



...Park by the side of the road and take some beautiful pictures to make the drive more interesting and keep the speed low to avoid accidents”

WITH breathtaking sceneries, 360 degrees view of the mountains and valleys, the beautiful big rocks and natural forests, Sibebe Resort is the perfect place to catch your breathe. Away from the maddening crowd, car horns and crowded towns, here you enjoy the fresh breeze from the well preserved nature surrounding the resort.

The drive to the resort is an adventure on its own, winding up the hill for about 3km on a small road passing some big rock and dangerous looking slopes. Park by the side of the road and take some beautiful pictures to make the drive more interesting and keep the speed low to avoid accidents. Tranquility is the order of the day during the week and weekend vibe is always the best for fun lovers. If you haven't been to Sibebe Resort surely you are yet to travel the best destinations of the world.

To keep entertained, the place offers wide range of activities from hiking, zip-lining, cultural experience, swimming and water slides.



The palm trees, coupled with the natural water pool, add a hint of Carribean vibes. (Courtesy pics).



Sibebe Resort's signature attraction is its waterslides. So why not slide into summer fun at Sibebe Resort, where kids take the plunge and parents snap the selfies. Now with adult slides too, the whole family can join in the splash.



OUTDOOR ADVENTURE

Exploring the Beauty of Eswatini





ZIPLINING

SIBEBE RESORT



Experience the thrill of Ziplining.
Call 7804 9560



WATER SLIDES

SIBEBE RESORT



A lil' more of summer time
splish splash!
Kids and adults.
Call 7804 9560



CULTURE

SIBEBE RESORT



Experience the Soul of Eswatini - Where Culture, Nature and Adventure Unite!
Call 7804 9560

RE-DISCOVER ESWATINI THE WANDERLUST



TO BE FEATURED HERE
CALL 7986 1147

Ready for adventure?

...Discover Phumula Guesthouse!

THIS isn't just a guesthouse; it's where adventure lives! Immerse yourself in an exhilarating outdoor experience filled with hiking trails that will take your breath away.

For those who love water, there's the thrill of bass fishing on serene waters. If you prefer two wheels, hop on your bike and get ready to soak in breathtaking mountain biking views at Phumula Guesthouse! Whether you're a pro or just starting, our trails have something for everyone. Don't miss out on this exhilarating experience! Book your ride now and let the mountains be your playground.

And when it's time to unwind, indulge in our luxurious accommodations that will make you feel right at home.

Are you ready to embark on the ultimate getaway?

Riding through the woods, feeling the rush of adrenaline with every turn! There's nothing quite like the thrill of mountain biking; just you, your bike and an endless adventure ahead!



After exploring you can enjoy a day by the pool too.



COME STAY WITH US

In our quiet picturesque garden setting, complete with lapa and braai area. We provide accommodation with warm and friendly hospitality within a traditional and homely atmosphere where you and your children will be made to feel exceptionally welcome by lodge owners Norma Robberts and Antonet Reid.



WE OFFER THE FOLLOWING:

- > Very reasonable tariffs
- > Breakfast and dinner on request and optional
- > Suitable for all stop-overs, tourists reps and semi-permanent guests
- > 23 double and 9 single en-suite rooms
- > Self catering units complete with flat screen DSTV, aircon and patio and braai stand
- > Open fire boma braai area
- > Conference hall (250 people)
- > Wedding venue, and beautiful garden for wedding pictures
- > Bird watching
- > Swimming pool

Tel: +268 2207 9099/ Fax: +268 220 79099
Reception Call: +268 78306775
Email: phumulaguesthouse@swazi.net



FARM GUEST HOUSE

www.phumulaguesthouse.co.za



THE BIG ADVENTURE LIST

GO BIG OR STAY HOME! THESE ARE FAR FROM ORDINARY

Swazi Trails offer trips on both the Lusutfu and the Nkomati Rivers. All equipment is provided. Trips led by experienced river guides. Picnic lunch and refreshments included. Special discounts for booking parties of 6+

BE WARNED - this is NOT an ordinary experience. Starting with a forest walk to the incredible Gobhola Caves, tackle 2 hours of non-stop climbing, crawling and scrambling through deep underground caverns. Overalls, helmets, lights and refreshments provided. This Swazi Trails activity can be enjoyed in the morning or evening.

Spend a half or whole day at leisure exploring the wildlife attractions or secluded swimming spots of Mlilwane Wildlife Sanctuary or Mantenga Nature Reserve. Ideal for families, couples, friends or even individual adventurers. Options include a guided trip or straight bicycle hire. Bicycle upgrades to 29er's and eBikes, on request.

Swazi Trails are Eswatini's team-building pioneers and experiential learning specialists. From half-or full-day sessions to multi-day experiences and packages including accommodation and transport. With +20 years experience to guide facilitation, programmes are professionally managed to the finest detail.

Until you take a guided scramble up the sheer front face of Sibebe Rock, you cannot say you've really experienced it. This granite dome rises 300m vertical metres from the valley below. Swazi Trails have pioneered routes from calf-trembling extreme, to manageable huff & puff. Trips include refreshments and a guide to ensure safety.

BOOK YOUR FUN NOW

ADVANCE booking of all activities is recommended to avoid disappointment.

Established in 1987 Swazi Trails is a fully insured and reputable tour operator with a 30-year reputation for excellence and fun with a capital F.

Visit the new Swazi Trails booking office at Legends Shared #4 Tivakashi Street, Mantenga, Ezulwini. Open

from Monday to Friday or Tel: +268 24162180 or mobile +268 76020261 for calls, messages and WhatsApp after hours and on week-ends.

Ask yourself - when last did you did something that you'll remember for a lifetime?

White Water Rafting
Adventure Caving
Mountain Biking (MTB)
Bicycle Hire
Guided Walks
Sibebe Xtreme hike

Mobile Tented Camp

Airport & Hotel Transfers
Corporate Team-building

24162180 / 76020261
info@swazitrails.co.sz

www.swazitrails.co.sz

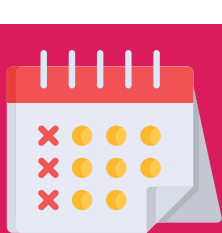
SWAZI TRAILS
ADVENTURE

LEGENDS SHARED



THIS is just the right place where you can hang your hat, kick off your boots and call it a night. It has affordable beds in

private rooms and dormitories, budget conference facility, self-catering kitchen, outdoor function venues, swimming pool, camping ground and start point for many adventure activities.



Events CALENDAR



WHERE TO DANCE THIS OCTOBER?

READY to put on your dancing shoes? October in the kingdom is alive with rhythm, colour and celebration. From thumping hip hop beats to soulful cultural showcases, there's no shortage of places to dance this month. Here are the highlights no music or dance lover should miss.

HIPNOTIK FESTIVAL 2025: HIP HOP FESTIVAL

When: October 4-5, 2025, from 1pm till late
Where: Riders Ranch, Manzini

If ever there was a festival tailor-made for dance, this is it. With live DJs, dance battles, headline acts and after-hours sets, Hipnotik 2025 promises non-stop energy and movement. Local heavyweights and guest artists are expected to grace the stage.

The month kicks off with Hipnotik, Eswatini's biggest hip hop festival. Expect high-energy performances, dance battles and after-hours sets that will keep you moving long down. With live DJs and is the ultimate two-day rhythm and flow.

ESWATINI FARMERS MARKET

Date: October 11, 2025
Where: Malkerns Country Club & Lizkhar Equestrian Estate, Ezulwini

This is more than a market – it's a vibrant festival of music, dance, food and local crafts. Enjoy fresh culinary delights, carnival-style games and activities, and embrace the LET'S GO TROPICAL! theme with bold floral outfits. Dance to live performances from MaWhoo, Morda and Sun-El Musician while making unforgettable family memories.



SWAZI POLO

When: October 11, 2025
Where: Yellowstone Estate, Lizkhar Equestrian, Zulwini

Swazi Polo blends fast-paced sport with fashion, live music and a festival spirit. With the 'Polka Dot' theme, guests can enjoy brunch, thrilling polo matches, fashion pop-ups and dance to performances by the Jaziel Brothers under the open sky. It is glamour, culture and fun all in one day.

UMUTHI FEST 2025

When: October 18, 2025
Where: Mavuso Exhibition Centre, Manzini

This is where you go if you want to dance from dusk to dawn. Umuthi Fest is billed as a celebration of music, dance and culture. Expect a blend of Afrosoul, Amapiano, house and local genres all poised to get the crowd on their feet. Mlindo The Vocalist is one of the confirmed highlights.

MISS CULTURAL HERITAGE ESWATINI FINALS

When: October 25, 2025 - 8pm
Where: Woodmaster, Grand Valley Nortise, Manzini

While primarily a pageant, this event features cultural performances, live bands and dance troupes. Be ready to join the movement when the stage opens up to the audience. So whether you're chasing the high-octane beats of Hip Hop at Hipnotik, surrendering to Afro rhythms at Umuthi Fest or enjoying the softer sway at market and polo events, October in Eswatini has plenty of dance in store. Let me know which region you'll be in — Mbabane, Manzini, or elsewhere and I can map out even more local nights for you.



LEGENDS

Backpacker Lodge
Tivakashi Street, Ezulwini Valley

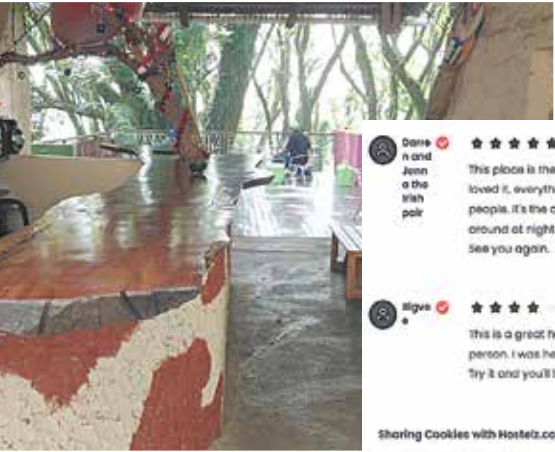
Shared space, shared culture, shared inspiration, shared fun!

Budget accommodation
Training, conferencing & teambuilding facilities
Self-catering kitchen, swimming pool & camping ground
Walking distance to restaurants, nature reserve & adventures

Call +268 24161870. SMS/WhatsApp +268 76191531
info@legends.co.sz Find us on Instagram & Facebook



A good place for outdoor living!



★★★★★

Donna and Jonn a the Irish pole

This place is the best place on earth, trust me, I loved it, everything from the staff jumping to the people, it's the only place in Africa where I can walk around at night without being a bit afraid, I loved it. See you again.

★★★★★

Aliguo

This is a great hostel if you're an outdoor kind of person. I was here this year and I had so much fun. Try it and you'll love it for sure.

Get access to exclusive travel content

Create your Free Account

What is your best travel tip?

Sign Up

Sharing Cookies with Hostelz.com

NEW STREETWISE® LOADED



STREETWISE® 5 LOADED

5 Pc. Original Recipe™
1 Lrg. Loaded Fries

115.90

STREETWISE® 2 LOADED

53.90

2 Pc. Original Recipe™
1 Loaded Fries



Also Available in
Streetwise® 3 Loaded for 69.90
& Streetwise® 4 Loaded for 95.90

All visuals & / or images for display purposes only. Prices may vary.
Delivery fees not included. While stocks last. Ts &Cs apply. Visit